



www.SoundHM.com

DEALER PRODUCT GUIDE



AUGER DRIVE EXTREME DUTY - SERIES 2

Blue Diamond® Extreme Duty Series 2 Auger Drive offers the ultimate in performance, quality, and cost effectiveness. Designed with high-grade materials and innovation, this design allows the gearbox to go down the hole, maximizing drilling depth while eliminating downtime. These drives are perfect for drilling and augering in most ground conditions.



FEATURES INCLUDE

- Compact high torque manufactured gearbox
- 2-piece shaft design ensures maximum side load ratings
- 2" hex shaft comes standard but also available with 2 9/16" round
- 5-year gear box warranty, 3-year motor warranty and lifetime shaft pull-out warranty, 4-year planetary drive warranty



MODEL	EX1	EX2	EX3	EX4	EX4HF
TORQUE FT-LBS @ 3,000 PSI	1,467	2,254	2,829	3,275	3,583
MAX TORQUE FT-LBS @ 3,500 PSI	1,712	2,630	3,300	3,821	4,180
RECOMMENDED FLOW (GPM)	6–16	10–26	10–30	10–30	10–36
PEAK EFFICIENCY (GPM)	8–11	12–16	17–20	19–23	21–26
MOTOR TYPE	Eaton				
MAX PRESSURE — DO NOT EXCEED	3,500 psi @ 16 gpm			3,500 psi @ 27 gpm	
MAX FLOW — DO NOT EXCEED	30 gpm @ 1,800 psi			42 gpm @ 3,100 psi	
MAX HP	33			55	
PRESSURE RELIEF VALVE	N/A			Included	
STANDARD OUTPUT SHAFT	2" Hex				
MAX DRILLING DIAMETER CLAY/ SHALE	12"	24"			
MAX DRILLING DIAMETER EARTH	24"	30"		40"	
WEIGHT (LBS)	101	123	125	180	
OVERALL LENGTH (IN)	24.5"	25.9"			29"
DIAMETER (IN)	7.4"	9.4"			

BROOMS ANGLE HEAVY DUTY-SERIES 2

Our Blue Diamond® Heavy Duty Series 2 Angle Broom is available in manual and hydraulic angle options. A simple-to-use control comes with the hydraulic angle model for control from inside your cab. The bristles are available in poly, steel, or poly/steel mix and are protected by retractable legs when not in use.



PART NUMBER	MODEL	WEIGHT
116207	60" Manual Angle	995 lbs
116212	72" Manual Angle	1,300 lbs
116217	84" Manual Angle	1,450 lbs
116222	96" Manual Angle	980 lbs
116205	60" Hydraulic Angle (Req Wiring Harness)	1,300 lbs
116210	72" Hydraulic Angle (Req Wiring Harness)	1,450 lbs
116215	84" Hydraulic Angle (Req Wiring Harness)	850 lbs
116220	96" Hydraulic Angle (Req Wiring Harness)	1,015 lbs



SHOWN WITH OPTIONAL WATER KIT
INSTALLED

FEATURES INCLUDE

- 60", 72", 84", and 96" widths
- 26" bristles, poly, steel, or poly/steel mix
- Manual or hydraulic options
- Stand protects bristles when not in use
- 14-pin OEM connector available
- 1-year warranty
- Optional water kit
- Mini model available
- 30° pivot angle



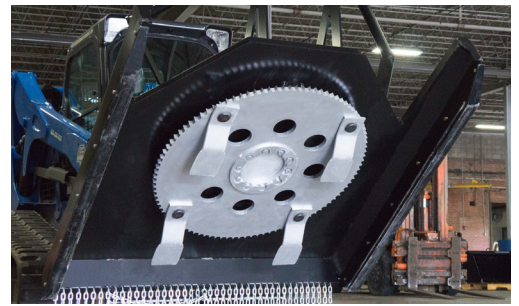
26" POLY, POLY/STEEL MIX, STEEL WAFERS



BRUSH CUTTER SEVERE DUTY

FEATURES INCLUDE

- 72" cutting width
- 4 double-sided blades
- Piston motor
- 1" thick blade carrier with serrated edge
- Visible pressure gauge to monitor workload
- Bolt-on wear shoes to adjust height
- Easy machine entry



500 LB BLADE CARRIER

PART NUMBER	MODEL	REQUIRED FLOW	WEIGHT
103120	72" Severe Duty, 150 CC	16-26 GPM	1,957 lbs
103125	72" Severe Duty, 200 CC	27-35 GPM	1,957 lbs
103130	72" Severe Duty, 250 CC	35-45 GPM	1,957 lbs

BUCKETS 4-IN-1



The Blue Diamond® 4-in-1 Bucket will make a skid steer or compact track loader into a very versatile machine. Use as a grapple for moving logs or debris, pushing dirt with the blade, digging with the bucket, and backdragging with the open bucket like a box blade. The 4-in-1 uses 2 powerful cylinders and can be greased on all pivot points. A pilot-operated check-valve to control drifting is available.



PART NUMBER	MODEL	STRUCK CAPACITY	WEIGHT
108780	66" 4-In-1, W/Smooth Edge	13.9 CU FT	862 lbs
108785	72" 4-In-1, W/Smooth Edge	15.2 CU FT	908 lbs
108790	78" 4-In-1, W/Smooth Edge	16.5 CU FT	979 lbs
108795	84" 4-In-1, W/Smooth Edge	17.7 CU FT	1,004 lbs
108776	60" 4-In-1, W/Teeth	12 CU FT	855 lbs
108781	66" 4-In-1, W/Teeth	13.9 CU FT	750 lbs
108786	72" 4-In-1, W/Teeth	15.2 CU FT	981 lbs
108791	78" 4-In-1, W/Teeth	16.5 CU FT	959 lbs
108796	84" 4-In-1, W/Teeth	17.7 CU FT	932 lbs

BUCKETS GENERAL PURPOSE

Our Blue Diamond® General Purpose Buckets for skid steers are available in a variety of configurations. We offer weld-on cutting edge, bolt-on cutting edge, teeth, toothbar, or a long-bottom version. These well-engineered, low-profile buckets offer a powerful breakout force and great visibility. Buckets up to 72" wide use 3/16" material back and bottom. The 78" and larger sizes use 1/4" material. All standard buckets are 20" tall and use a 3/4" by 6" cutting edge. The standard bottom is 30" front to back, and the long-bottom bucket is 36".



TOOTH BUCKET



SMOOTH BUCKET

PART NUMBER	MODEL	STRUCK CAPACITY	WEIGHT
108090	60" Low Profile-Smooth	10.8 CU FT	334 lbs
108095	60" Low Profile-Tooth	10.8 CU FT	384 lbs
108100	66" Low Profile-Smooth	12.2 CU FT	354 lbs
108105	66" Low Profile-Tooth	12.2 CU FT	409 lbs
108110	72" Low Profile-Smooth	13.2 CU FT	378 lbs
108115	72" Low Profile-Tooth	13.2 CU FT	437 lbs
108120	78" Low Profile-Smooth	14.3 CU FT	408 lbs
108125	78" Low Profile-Tooth	14.3 CU FT	460 lbs
108130	84" Low Profile-Smooth	15.7 CU FT	436 lbs
108135	84" Low Profile-Tooth	15.7 CU FT	515 lbs
108140	60" Low Profile-Long Bottom-Smooth	15.7 CU FT	385 lbs
108145	60" Low Profile-Long Bottom-Tooth	15.7 CU FT	434 lbs
108150	66" Low Profile-Long Bottom-Smooth	17.3 CU FT	426 lbs
108155	66" Low Profile-Long Bottom-Tooth	17.3 CU FT	472 lbs
108160	72" Low Profile-Long Bottom-Smooth	18.6 CU FT	446 lbs
108165	72" Low Profile-Long Bottom-Tooth	18.6 CU FT	505 lbs
108170	78" Low Profile-Long Bottom-Smooth	20 CU FT	441 lbs
108180	84" Low Profile-Long Bottom-Tooth	22 CU FT	505 lbs

BUCKETS UTILITY



The Blue Diamond® Utility Bucket is very rugged. It offers more capacity than a standard low-profile bucket yet does not get as cumbersome as a high-capacity bucket. Designed for larger machines, it can handle the horsepower and not get overloaded as fast as some OEM buckets. The rolled back on the inside allows the bucket to clean out easier yet the rear heel still offers excellent backdragging and leveling capabilities.



SMOOTH BUCKET
34"D X 22"H



TOOTH BUCKET

PART NUMBER	MODEL	STRUCK CAPACITY	WEIGHT
108960	72" Smooth W/Bolt-On Edge	13.5 CU FT	610 lbs
108965	72" Tooth	13.5 CU FT	610 lbs
108970	78" Smooth W/Bolt-On Edge	14.58 CU FT	653 lbs
108975	78" Tooth	14.58 CU FT	650 lbs
108980	84" Smooth W/Bolt-On Edge	15.66 CU FT	695 lbs
108985	84" Tooth	15.66 CU FT	678 lbs
108987	90" Smooth W/Bolt-On Edge	16.74 CU FT	585 lbs

UTILITY - HIGH CAPACITY



PART NUMBER	MODEL	STRUCK CAPACITY	WEIGHT
108944	72" Smooth W/Bolt-On Edge	19.71 CU FT	785 lbs
108946	72" Tooth	19.71 CU FT	785 lbs
108948	78" Smooth W/Bolt-On Edge	21.33 CU FT	785 lbs
108950	78" Tooth	21.33 CU FT	785 lbs
108952	84" Smooth W/Bolt-On Edge	23 CU FT	785 lbs
108954	84" Tooth	23 CU FT	792 lbs
108956	90" Smooth W/Bolt-On Edge	25 CU FT	792 lbs
108957	90" Tooth	25 CU FT	795 lbs
108958	96" Smooth W/Bolt-On Edge	26.19 CU FT	802 lbs
108959	96" Tooth	26.19 CU FT	802 lbs



SMOOTH BUCKET
38"D X 28"H



TOOTH BUCKET



PALLET FORK - HEAVY DUTY



PART NUMBER	MODEL	TINE SIZE	LIFT CAPACITY	WEIGHT
314011	Pallet Fork, HD, W/Steps	48" X 1 1/2"	5,000 LBS	375 lbs
314012	Pallet Fork, HD, No Steps	48" X 1 3/4"	5,000 LBS	375 lbs
314013	Pallet Fork, HD, W/Steps	48" X 1 3/4"	5,000 LBS	375 lbs
314014	Pallet Fork, HD, W/Steps	60" X 1 3/4"	5,000 LBS	452 lbs
314085	Pallet Fork, HD, W/Steps	60" X 1 1/2"	5,000 LBS	420 lbs
314090	Pallet Fork, HD, W/Steps	72" X 1 3/4"	5,000 LBS	500 lbs



PALLET FORK - WALK THROUGH STYLE



PART NUMBER	MODEL	TINE SIZE	LIFT CAPACITY	WEIGHT
314009	4200 lb Walkthrough with 48" Tines	1 1/2" X 48"	4,200 lbs	369 lbs
314100	4200 lb Walkthrough with 60" Tines	1 1/2" X 48"	4,200 lbs	411 lbs
314008	5000 lb Walkthrough with 48" Tines	1 1/2" X 48"	5,000 lbs	380 lbs
314110	5000 lb Walkthrough with 60" Tines	1 1/2" X 48"	5,000 lbs	422 lbs



PALLET FORK - EXTRA LARGE, HEAVY DUTY

Our extra heavy duty pallet forks are rated for 6,000 lbs lift. Using an easy-to-see-through over size frame, this very heavy duty pallet fork provides added lift capacity for larger skid steers. The heavily reinforced brick guard and quick attach area make it extremely durable for heavy use. 48" x 1.75" tines are standard and 60" and 72" are available. These pallet forks feature a extra wide and tall frame and they are serial numbered with lifting capacities in lb. and kg. to meet job site requirement for lifting equipment.



FEATURES INCLUDE

- 3" heavily reinforced carriage bar
- 51" wide frame
- 44" Tall frame
- 6,000 lb. capacity
- 48" x 4" x 1 3/4" tines
- Side steps standard



FORK

PALLET FORK - TALL FRAME, HEAVY DUTY D-RING

PART NUMBER	MODEL	TINE SIZE	LIFT CAPACITY	WEIGHT
314019	Pallet Fork, HD, W/Steps/D-Ring	48" X 1 3/4"	6,000 LBS	375 lbs
314020	Pallet Fork, HD, W/Steps/D-Ring	48" X 1 1/2"	5,500 LBS	486 lbs
314021	Pallet Fork, HD, W/Steps/D-Ring	60" X 1 3/4"	6,000 LBS	560 lbs
314022	Pallet Fork, HD, W/Steps/D-Ring	60" X 1 1/2"	5,500 LBS	260 lbs
314023	Pallet Fork, HD, W/Steps/D-Ring	72" X 1 3/4"	6,000 LBS	562 lbs
314024	Pallet Fork, HD, W/Steps/D-Ring	42" X 1 3/4"	6,000 LBS	481 lbs



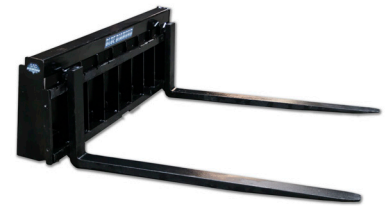
PALLET FORK - CLASS 3, 10,000 LBS.

PART NUMBER	MODEL	TINE SIZE	LIFT CAPACITY	WEIGHT
314150	Frame	1 3/4" X 48"	10,000 lbs	732 lbs
314152	Frame	1 3/4" X 60"	10,000 lbs	595 lbs
314155	Frame	2" X 60"	10,000 lbs	758 lbs
314160	Frame	2" X 72"	10,000 lbs	828 lbs
314165	Frame	2" X 84"	10,000 lbs	875 lbs
314167	Frame	2" X 96"	10,000 lbs	848 lbs



PALLET FORK - WIDE FRAME, HEAVY DUTY

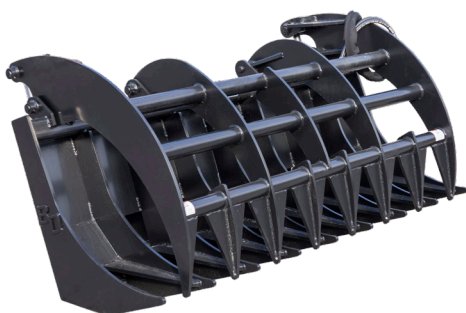
PART NUMBER	MODEL	TINE SIZE	LIFT CAPACITY	WEIGHT
314025	Pallet Fork W/Backrest	1 3/4" X 72"	5,500 LBS	738 lbs
314027	Pallet Fork W/Backrest	1 3/4" X 60"	5,500 LBS	690 lbs
314028	Pallet Fork	1 3/4" X 60"	5,500 LBS	1,080 lbs
314029	Pallet Fork	1 3/4" X 72"	5,500 LBS	738 lbs



GRAPPLES

RAKE

The Blue Diamond® Grapple Rake is available with dual top clamps or a large single clamp, based on your needs. The Severe Duty model has replaceable teeth, and all pivot points have grease fittings. This grapple rake is a great alternative to a root grapple where visibility is critical.



HEAVY DUTY



SEVERE DUTY

PART NUMBER	MODEL	WEIGHT
107001	63" Grapple, Rake, HD, Single Clamp	770 lbs
107005	72" Grapple, Rake, HD, Single Clamp	689 lbs
107010	80" Grapple, Rake, HD, Single Clamp	740 lbs
107015	84" Grapple, Rake, HD, Single Clamp	955 lbs
106515	72" Grapple, Rake, Severe Duty, Dual Clamp	1,256 lbs
106520	78" Grapple, Rake, Severe Duty, Dual Clamp	1,269 lbs
106525	84" Grapple, Rake, Severe Duty, Dual Clamp	1,350 lbs

LOG GRAPPLE



FEATURES INCLUDE

- Manual or hydraulic rotation
- Opens to 66.5"
- Closes to under 4"
- Load stabilization brace
- Rope tie off point



PART NUMBER	MODEL	WEIGHT
106715	Manual Rotation	337 lbs
106720	Hydraulic Rotation	330 lbs

Part numbers listed are not machine specific. Specify which mount is needed.



LOG SPLITTER

The Mini Log Splitter can be used horizontally or vertically. The log splitter's powerful cylinder is controlled by a single, easy-to-use lever. It can handle up to a 24" log with ease. The cylinder is a 4" bore, 24" stroke with a 1.25" rod.



PART NUMBER	MODEL	WEIGHT
150000	Log Splitter	475 lbs

Part numbers listed are not machine specific. Specify which mount is needed.

VIBRATORY POST DRIVER

The Mini Vibratory Post Driver, packs more of a punch than most hammer style drivers. By using hydraulic orbital technology, the Blue Diamond® Post Driver uses your machines' auxiliary flow in the most efficient way.

PART NUMBER	MODEL	WEIGHT
100500	Post Driver	264 lbs
100505	Post Driver w/tilt	400 lbs

Part numbers listed are not machine specific. Specify which mount is needed.



POWER RAKE

HEAVY DUTY

The Blue Diamond® Heavy Duty Mini Power Rake follows close on the heels of our previously released severe duty model. This lighter unit is suited to smaller-frame skid steers and walk-behind machines. The bolt-on mount provides greater flexibility for rental companies and dealers to have the right model for the right machine, with mounts offered for mini and full size skid steer machines.



PART NUMBER	132407	132400	132408	132401	132409	132402	132403
SIZE/ MODEL	48"	48"	60"	60"	72"	72"	Power Rake Mount
TEETH	Replaceable	Fixed	Replaceable	Fixed	Replaceable	Fixed	-
WEIGHT	580 lbs	580 lbs	600 lbs	600 lbs	628 lbs	628 lbs	-

Part numbers listed are not machine specific. Specify which mount is needed.
Weights do not include mounts.
Select base model, mount and hydraulic kit

ROTOTILLER

HEAVY DUTY

The Blue Diamond® Mini Rototiller is brutally strong for mini skid steer machines and uses all the same components as our full-size unit. The specially designed 315 cc motor has built-in, oversized nose cone bearings for long life. The bidirectional operation is accomplished with swinging tines that rotate to maximum performance angle in either direction.



PART NUMBER	MODEL	WEIGHT
129005	48" Rototiller	382 lbs
129007	56" Rototiller	410 lbs

Part numbers listed are not machine specific. Specify which mount is needed.

FEATURES INCLUDE

- 6" tilling depth
- 1 year warranty
- 12 GPM minimum flow required
- 315cc specially designed motor





COMPLETE ATTACHMENT SOLUTIONS

4512 Anderson Road | Knoxville, TN 37918
ph 888-376-7027 | fax 865-246-2007
info@bluediamondattachments.com | BlueDiamondAttachments.com



© 2022 Blue Diamond® Attachments. All Rights Reserved.