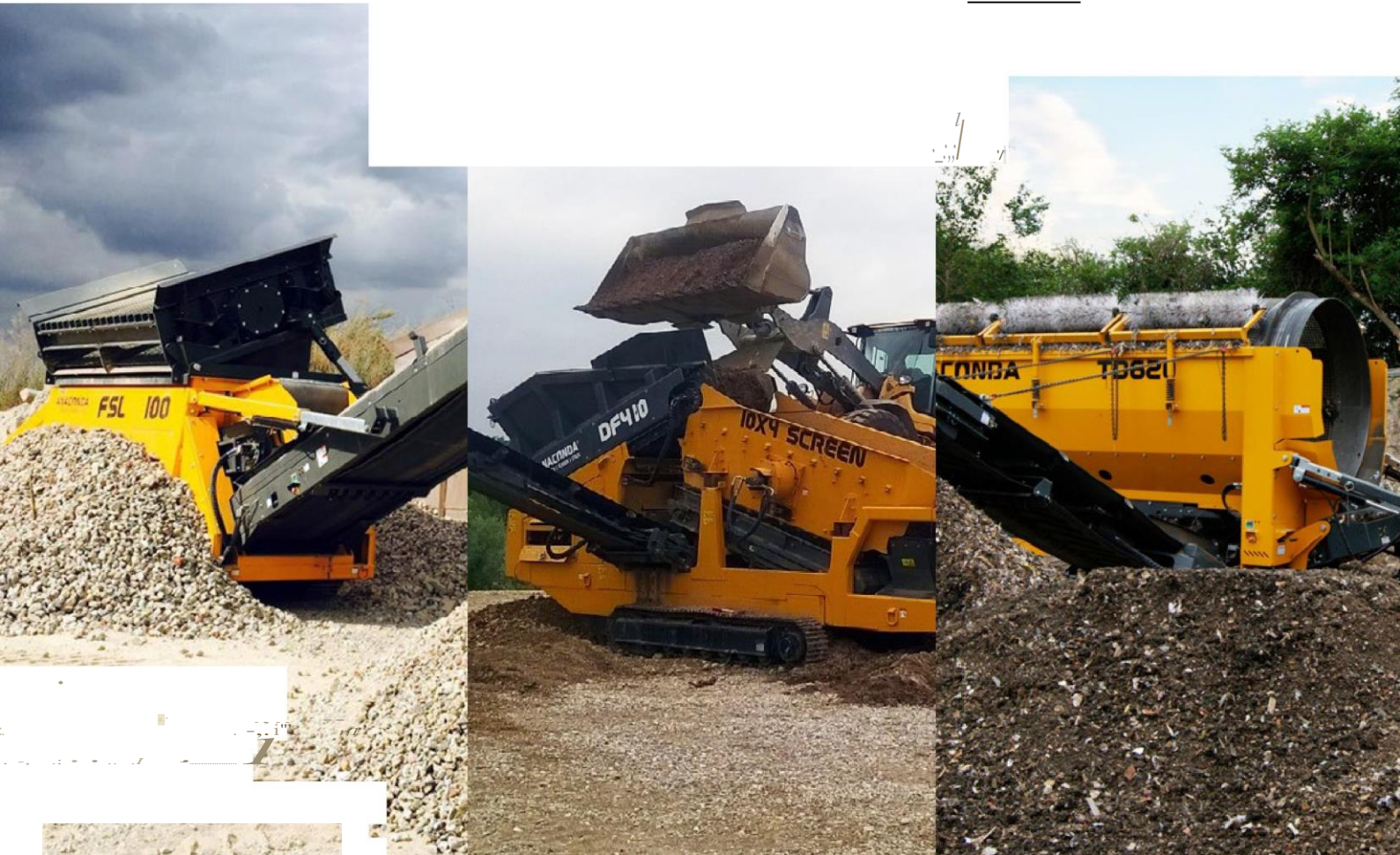


ANACONDA®



www.SoundHM.COM



Driving Innovation for 10 Years





NORTHERN IRELAND IS UNDOUBTEDLY THE GLOBAL LEADER IN MOBILE SCREENING AND MATERIALS HANDLING EQUIPMENT.

Anaconda Equipment International Ltd has played its part in this prestigious recognition. The company was originally formed in 2005 as sub-contract specialists before launching the Anaconda brand in 2008. Over the last decade the company has established itself as a reliable partner of choice under the Anaconda brand with over 1200 machines, shipped to more than 50 countries over 6 continents.

With a bespoke manufacturing facility in County Tyrone, Northern Ireland, and a full-service master distribution facility in Massachusetts, USA, the company specialises in the design and manufacture of mobile crushing, screening, Recycling, Loading and conveying equipment for the aggregate, organics and recycling industries.

Anaconda uses only the finest component parts and designs products that are robust, user friendly and with many features/options to benefit the customers.



WWW.ANACONDAEQUIPMENT.COM



ANACONDA PRODUCT PORTFOLIO

CRUSHING RANGE



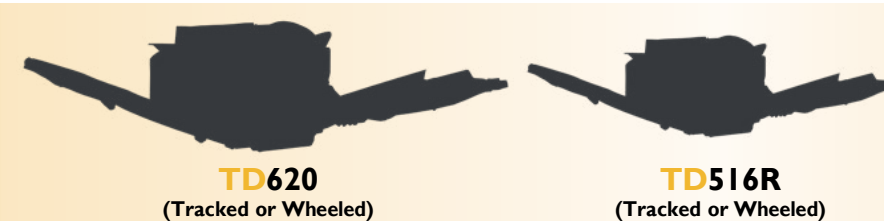
SCALPING SCREEN RANGE



FINISHING SCREEN RANGE



TROMMEL SCREEN RANGE



FEEDER LOADER RANGE



TRACKED CONVEYOR RANGE



WHEELED CONVEYOR RANGE



WWW.ANACONDAEQUIPMENT.COM





TRACKED CRUSHERS

THE ANACONDA CRUSHING RANGE OF MOBILE CRUSHERS ARE DESIGNED TO SUIT APPLICATIONS WHERE THE TOUGHEST DEMANDS OF PRIMARY CRUSHING ARE OF IMPERATIVE IMPORTANCE.

Anaconda's Crushing Range are aggressive and powerful crushers that bring together the proven ability of the Universal Crushers Jaw and Impact Chambers within an innovative Anaconda Tracked Solution.

The **J12** Jaw Crusher has a chamber size of 1100mm x 700mm (44" x 28") and the **I12** Impact Crusher has a chamber size of 1090mm x 1040mm (45" x 43") which means these beasts will make light work of any application.

Utilising an extremely fuel efficient and powerful **Hydraulic System** allows our crushers to provide staggering levels of productivity. The physical size, user friendly controls and ease of transport make our crushers the perfect crushing solution.

WWW.ANACONDAEQUIPMENT.COM

FEATURES AND BENEFITS

- I. Cummins IPU - L9 380 - Tier 2 (283Kw) - ROW (J12)
- II. Cummins IPU - L9 380 - Stage 5 (283Kw) - EU & USA (J12)
- III. Cummins IPU - L9 380 - Tier 2 (283Kw) - ROW (I12)
- IV. Cummins IPU - L9 380 - Stage 5 (283Kw) - EU & USA (I12)

UNIVERSAL CRUSHERS JAW AND IMPACT CHAMBERS
 ALL HYDRAULIC TOGGLE AND TENSION ROD SET-UP (J12)
 DIRECT HYDRAULIC DRIVE ROTATING CASE (I12)
 CSS RANGE 50-190MM (2"-7.5") (J12)
 DIRECT HYDRAULIC DRIVE SYSTEM
 JAW SPEED RANGE (250, 265-280 RPM)
 IMPACT SPEED RANGE (500-650 RPM)
 HYDRAULICALLY FOLDING HOPPER WING-PLATES
 HOPPER CAPACITY OF 6.5M³ (8.5yds³)
 VARIABLE SPEED ON DISCHARGE CONVEYORS
 OVERBAND MAGNET (DUAL SIDE DISCHARGE)
 VIBRATING PAN FEEDER WITH PRESCREEN

OPTIONS

RECIRCULATION PACKAGE
 RADIO REMOTE CONTROL
 RECIRCULATION SCREEN DECKS - MESH OR PIANO WIRE
 DUST COVERS ON MAIN AND DISCHARGE CONVEYORS
 HOPPER EXTENSIONS
 VARIOUS FEEDER UNDERSCREEN MESH
 BELT SCALE
 DEFLECTOR PLATE
 COLD WEATHER PACKAGE
 LIGHT MAST AND CABINET LIGHTS

CRUSHERS



WEIGHT

45,350 KG/ 49.5 US. TON - J12
 40,000 KG/ 44.1 US. TON - I12

WWW.ANACONDAEQUIPMENT.COM



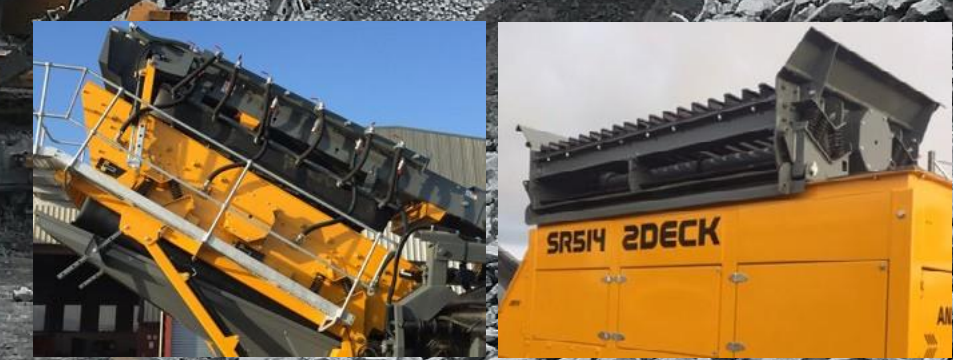
TRACKED FINISHING SCREENS

THE ANACONDA SR RANGE OF MOBILE SCREENS HAS BEEN DESIGNED WHERE FINE SCREENING IS REQUIRED.

The SR410 range is designed for compact screening and stockpiling whilst also achieving optimum productivity levels. The SR410 range of tracked screens will fold and ship worldwide in a standard 40' sea container, thus keeping shipping costs to a minimum.

The SR520 and SR514 range of screens offer greater screening capacity with performance of up to 500tph possible depending on the model. Both models are available with two or three deck dry or wet screens.

The SR Range can be set up and running within 20 minutes of delivery. Aided with hydraulic controls to operate and position all conveyors, screen box and landing legs.



RINSER SCREEN

VIBRATING GRID

FEATURES AND BENEFITS

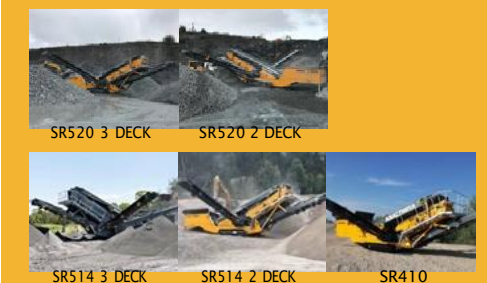
- I. TIER 3 - CAT4.4 OR JCB444 DIESELMAX - ROW (SR520)
- II. TIER 4F - JCB444 ECOMAX IPU OR STAGE 5 CAT - USA (SR520)
- III. JCB444 DIESELMAX OR STAGE 5 CAT - EU (SR520)
- IV. TIER 3 - CAT4.4 OR JCB444 DIESELMAX - ROW (SR514)
- V. TIER 4F - JCB444 ECOMAX IPU OR STAGE 5 CAT 3.6 - USA (SR514)
- VI. STAGE 5 - JCB444 DIESELMAX OR CAT 3.6 - EU (SR514)
- VII. TIER 3 - T.DEUTZ 2011 OR JCB444 DIESELMAX - ROW (SR410)
- VIII. TIER 4F - JCB444 ECOMAX IPU OR STAGE 5 CAT - USA (SR410)
- IV. STAGE 5 - T.DEUTZ 2.9 L4 / CAT / JCB444 DIESELMAX - EU (SR410)

- TWO DECK SCREENBOX (THREE DECK OPTION ON THE SR514 / SR520)
- HOPPER CAPACITY OF 4M³ (880 GALLONS) SR410
- HOPPER CAPACITY OF 6M³ (1320 GALLONS) SR514 / SR520
- SCREEN MESH TOP-DECK (AND MIDDLE ON THE SR514)
- SIDE TENSIONED; BOTTOM-DECK END TENSIONED
- VARIABLE SPEED CONTROL ON ALL STOCKPILE BELTS
- SCREENBOX WALKWAYS FOR EASE OF MAINTENANCE
- SCREENBOX ANGLE ADJUSTABLE: 18-30° (SR520) 22-34° (SR514) 28-36° (SR410)

OPTIONS

- RINSER SCREEN
- ANTI-ROLL BACK
- HOPPER EXTENSIONS
- VIBRATING GRID
- TIPPING GRID
- RADIO REMOTE CONTROL
- DUST COVERS
- OVERBAND MAGNET
- ANTI-ROLL BACK
- SCREEN DECKS - MESH OR PIANO WIRE
- PUNCH PLATE

SCREENERS



WEIGHT

- 2 DECK: 33,000KG / 36.38 US. TON - SR520
- 3 DECK: 37,500KG / 41.34 US. TON - SR520
- 2 DECK: 26,500KG / 29 US. TON - SR514
- 3 DECK: 28,500KG / 31 US. TON - SR514
- 15,500KG / 17 US. TONS - SR410



TRACKED SCALPING SCREENS

THE ANACONDA DF RANGE OF MOBILE SCALPERS HAS BEEN DESIGNED TO SUIT A VARIETY OF APPLICATIONS.

The DF410 range is designed for optimum screening and stockpiling of materials with the longest screen box in the compact screening segment of the market. The DF410 range of tracked screens will fold and ship worldwide in a standard 40' sea container thus keeping shipping costs to a minimum!

The Anaconda DF518 and DF514 models offers greater screening capacity with performances of up to 500tph possible depending on the model. Both the DF514 and DF518 offer a two or three way separation of material and are available in belt feeder or apron feeder models.

The DF Range can be set up and running within 20 minutes of delivery. Aided with hydraulic controls to operate and position all conveyors and screen box.

WWW.ANACONDAEQUIPMENT.COM



FEATURES AND BENEFITS

- I. TIER 3 - CAT4.4 OR JCB444 DIESELMAX - ROW (DF518)
- II. TIER 4F - JCB444 ECOMAX IPU OR STAGE 5 CAT 3.6- USA (DF518)
- III. STAGE 5 - CAT 3.6 OR JCB444 DIESELMAX - EU (DF518)
- IV. TIER 3 - CAT4.4 OR JCB444 DIESELMAX - ROW (DF514)
- V. TIER 4F - JCB444 ECOMAX IPU OR STAGE 5 CAT 3.6 - USA (DF514)
- VI. STAGE 5 - CAT 3.6 OR JCB444 DIESELMAX - EU (DF514)
- VII. TIER 3 - T.DEUTZ 2011 OR JCB444 DIESELMAX - ROW (DF410)
- VIII. TIER 4F - JCB444 ECOMAX IPU OR STAGE 5 CAT - USA (DF410)
- IV. STAGE 5 - T.DEUTZ 2.9 L4 / CAT / JCB444 DIESELMAX - EU (DF410)

VARIABLE SPEED HEAVY DUTY BELT FEEDER WITH IMPACT BED
 FLIP DOWN HOPPER TAILGATE TO ALLOW DIRECT FEED FORM A CRUSHER
 HYDRAULIC FOLDING STOCKPILE CONVEYORS
 VARIABLE SCREEN ANGLE 13-17° (DF518)
 VARIABLE SCREEN ANGLE 15-19° (DF514)
 FIXED SCREEN ANGLE AT 15° (DF410)
 SIDE TENSIONED TOP DECK - END TENSIONED BOTTOM DECK

WEIGHT

APRON FEEDER: 34,500KG / 38.6 US. TON - DF518
 BELT FEEDER: 32,500KG / 35.8 US. TON - DF518
 APRON FEEDER: 27,000KG / 29.7 US. TON - DF514
 BELT FEEDER: 24,500KG / 27 US. TON - DF514
 15,600KG / 17.16 US. TONS - DF410

WWW.ANACONDAEQUIPMENT.COM

OPTIONS

APRON FEEDER (DF518 - DF514)
 RADIO REMOTE CONTROL
 OVERBAND MAGNET
 SCREEN DECKS - MESH, BOFAR BAR, FINGER SCREENS
 OR PUNCH PLATES

SCALPERS





TRACKED SCALPING SCREENS

THE FSL 100 IS A HEAVY DUTY SCALPING SCREEN DESIGNED FOR THE MOST DIFFICULT OF APPLICATIONS.

The FSL100 scalping screen is one of the most robust and reliable scalping screens on the market. Built to handle the toughest of applications, the FSL100 comes with a double-deck vibrating screen and the longest stockpiling conveyor available.

The FSL 100 can be shipped worldwide in a standard 40' container thus keeping shipping costs to a minimum.

The FSL Range can be set up and running within 20 minutes of delivery. Aided with hydraulic controls to operate and position conveyor and double-deck vibrating screen.

FEATURES AND BENEFITS

- I. TIER 3 - T.DEUTZ 2011 OR JCB444 DIESELMAX - ROW (FSL100)
- II. TIER 4F - JCB444 ECOMAX IPU OR STAGE 5 CAT - USA (FSL100)
- III. STAGE 5 - T.DEUTZ 2.9 L4 / CAT / JCB444 DIESELMAX - EU (FSL100)

ROBUST CHASSIS & TRACK FRAME ENSURES MAXIMUM DURABILITY
 ANGLE ADJUSTABLE VIBRATING GRID
 TIPPING FUNCTION ACTIVATED HYDRAULICALLY
 CONVEYOR BELT - 3PLY 1050MM (42") WIDE (PLAIN OR CHEVRON)
 INDEPENDENTLY CONTROLLED FEEDER AND DISCHARGE BELTS

OPTIONS

VIBRATING GRIND WING EXTENSIONS
 OVERBAND MAGNET
 WEAR RESISTANT HOPPER LINERS
 RADIO REMOTE CONTROL
 DUST COVERS

SCALPERS



FSL100

WEIGHT

20,000 KG / 22 US TON



TRACKED TROMMEL SCREENS

THE ANACONDA TD RANGE OF TRACKED TROMMELS ARE DESIGNED TO DELIVER OUTSTANDING PERFORMANCE IN TESTING APPLICATIONS.

The largest Anaconda trommel, the TD620, is suitable for processing a variety of materials including compost, wood chip, soil, construction commercial waste. To minimise downtime the TD620 has been specifically designed for ease of maintenance and service. The TD620 trommel screen is available on wheels or crawler tracks.

Quick and easy to transport around, the TD516R is robust and easy to use ensuring optimum levels of performance every time. Material the TD516R is used to process includes, soil, compost, wood chip, skip fines, quarry overburden, C&D waste, Shredded household waste, palm kernel and incinerator ash.

The TD Range can be set up and running within 20 minutes of delivery. Aided with hydraulic controls to operate and position all conveyors, vibrating grid and the drum.

FEATURES AND BENEFITS

- I. TIER 3 - CAT4.4 OR JCB444 DIESELMAX - ROW (TD620)
- II. TIER 4F - JCB444 ECOMAX IPU OR STAGE 5 CAT 3.6 - USA (TD620)
- III. STAGE 5 - JCB444 DIESELMAX OR CAT 3.6 - EU (TD620)
- IV. TIER 3 - JCB444 DIESELMAX - ROW (TD516R)
- V. TIER 4F - JCB444 ECOMAX IPU OR STAGE 5 CAT - USA (TD516R)
- VI. STAGE 5 - T.DEUTZ 2.9 L4 / CAT / JCB444 DIESELMAX - EU (TD516R)

- SCREENING DRUM 5.41M LONG X 2.0M DIAMETER (TD620)
- SCREENING DRUM 5.5M LONG X 1.37M DIAMETER (TD516R)
- FORWARD AND REVERSE 4 WHEEL DRIVE DRUM SYSTEM
- VARIABLE SPEED ON SCREENING DRUM AND ALL CONVEYORS
- QUICK DRUM CHANGE (HYDRAULIC DRUM LIFT OUT) (TD620)
- QUICK DRUM RELEASE AND REPLACE SYSTEM (TD516R)
- DRUM LOAD SENSING SYSTEM (TD620)
- DRUM ANGLE ADJUSTABLE 0° TO 6° (TD620) 0° TO 4° (TD516R)

OPTIONS

- PUNCH PLATE MESH
- SCROLL SCREENING DRUM
- REMOTE TIPPING GRID
- RADIO REMOTE CONTROL
- HOPPER EXTENSIONS
- WHEEL CHASSIS
- SINGLE DECK VIBRATING GRID (TD620)

TROMMELS



TD620

TD516R

WEIGHT

- 20,000 KG / 22 US TON - TD620
- 14,500 KG / 16 US TON - TD516R



TRACKED FEEDERS

THE FTR FEED LOADERS ARE THE LATEST IN A RANGE OF PRODUCTS DESIGNED FOR THE MATERIAL HANDLING INDUSTRY.

The FTR200 Feeder Conveyor is the latest in a range of products designed for the material handling industry. The FTR150 is robust and extremely cost effective and has been designed for the sand & gravel, aggregates, coal and other related industries.

The unit has a variable speed belt feeder and a 50ft (15m) long stockpiling conveyor which is ideal for truck/wagon/barge loading or to act as a surge feeder in a new/existing quarry plant. Like all Anaconda products, the FTR150 will fold and ship worldwide in a standard 40ft container.

The FTR Feeder Conveyor is a range of products designed for the material handling industry. The FTR100 is robust and can be used in a variety of applications including sand & gravel, aggregates, coal, and wood chip. The unit has a variable speed belt feeder and a 33ft (10m) stockpiling conveyor which is ideal for truck/wagon/barge loading or to act as a surge feeder in a new/existing quarry plant.

WWW.ANACONDAEQUIPMENT.COM



FEATURES AND BENEFITS

- I. TIER 3 - T.DEUTZ 2011 OR JCB444 DIESELMAX - ROW (FTR100,150 & 200)
- II. TIER 4F - JCB444 ECOMAX IPU OR STAGE 5 CAT - USA (FTR100,150 & 200)
- III. STAGE 5 - T.DEUTZ 2.9 L4 / CAT / JCB444 DIESELMAX - EU (FTR100,150 & 200)

HOPPER CAPACITY OF 6M³ (1320 GALLONS) WITH AN OPTION TO INCREASE THIS TO 9M³ (1980 GALLONS)
 VARIABLE SPEED 4 PLY 1050MM (42") WIDE FEEDER BELT
 HYDRAULIC JACKING LEGS FOR EASE OF SET UP
 HYDRAULIC FOLDING HEAD SECTION AS STANDARD
 EASY ACCESS TO ENGINE COMPARTMENT

WEIGHT

FTR200	Open Feed: 14,485kg / 15.9 US ton w/ Tipping Grid: 17,000kg / 18.7 US ton w/ Livehead: 18,985kg / 20.9 US ton
FTR150	Open Feed: 13,300kg / 14.7 US ton w/ Tipping Grid: 15,000kg / 16.66 US ton w/ Livehead: 17,800kg / 19.6 US ton
FTR100	Open Feed: 12,700kg / 14 US ton w/ Tipping Grid: 14,400kg / 15.8 US ton w/ Livehead: 17,200kg / 18.9 US ton

WWW.ANACONDAEQUIPMENT.COM



MULCHER

HOPPER EXTENSIONS

RADIO REMOTE

TIPPING/VIBRATING GRID

OPTIONS

- TWIN DECK VIBRATION GRID
- STRAIGHT EXTENSIONS
- MULCHING DRUM
- REMOTE CONTROL TIPPING GRID
- TWIN DRIVE MOTORS ON FEEDER AND / OR MAIN CONVEYOR
- OVERBAND MAGNET
- ANTI-ROLL BACK ON MAIN CONVEYOR
- DUST COVERS
- RADIO REMOTE CONTROL
- OPTIONAL FLARED EXTENSION

FEED LOADERS



FTR200

FTR150

FTR100





MOBILE CONVEYORS

ANACONDAS RANGE OF CONVEYORS ARE DESIGNED TO MINIMISE OPERATING COSTS WHILST MAXIMISING STOCKPILE CAPACITY.

Anacondas range of stockpiling conveyors has been designed to maximise stockpile volume. Stackers are available from 50ft (15m) to 100ft (30m) with radial stockpiles of up to 5000m³.

Our range of wheeled and tracked conveyors can all be containerised and shipped worldwide cost effectively. Our wheeled conveyors can be containerized in batches of 4 depending on the model.

Our tracked conveyors, with the exception of the TR100, hydraulically fold and are tracked into and out of the container without any dismantling, meaning they are operational within 20 mins of container delivery.

FEATURES AND BENEFITS

- I. TIER 3 - JCB444 DIESELMAX - ROW (TR75 & TR100)
- II. TIER 3 - CAT 2.2 - ROW (TR60 & ALL STS)
- III. TIER 4F - JCB444 ECOMAX IPU OR STAGE 5 CAT - USA (ALL TRS & ALL STS)
- IV. STAGE 5 - T.DEUTZ 2.9 L4 / CAT / JCB444 DIESELMAX - EU (ALL TRS & ALL STS)

OPTIONS

- SELF POWERED - CAT, JCB OR DEUTZ ENGINE (WHEELED)
- OVERBAND MAGNET (TRACKED)
- CHEVRON BELT
- EXTENDED FEEDBOOTS
- ENCLOSED SKIRTING

WEIGHT

TR CONVEYOR RANGE:

- TR100 - 19,000KG / 20.94 US ton
- TR75 - 14,500KG / 16.0 US ton
- TR60 - 11,000KG 12.1 US ton

ST CONVEYOR RANGE:

- ST80 - 10,500kg / 11.59 US ton
- ST60 - 3200kg / 3.53 US ton
- ST50 - 2800kg / 3.09 US ton

MOBILE CONVEYORS



TR RANGE

ST RANGE

SUCCESS



AWARDS

Prestigious awards have helped Anaconda build a profile in the USA, Australia, Europe and more recently in the Far East. These awards have given Anaconda a global stamp of approval, recognised in numerous countries. These awards provide an independent endorsement of our company's expertise and professionalism to both customers and distributors around the globe.

"Everyone at Anaconda is truly dedicated to developing long term open and honest relationships with all the people we work with."

We as a company strive every day to learn and become better, too offer better quality machines and after-sales support too our partners.

Transparency is embedded in our ethics and we will not compromise on the quality of our equipment in this competitive industry. We work best manufacturing practices always and use only quality branded components throughout our machines.

For us it is not simply about supplying a product, it is about creating long standing partnerships with distributors and customers. It is about us being a center of excellence for product information, sales support, technical support and after-sales service.

Our customers' needs are at the foreground of our organisation and with a reputation of honesty, loyalty and focus on after-sales, service and support we have the tools to make each customer journey the most rewarding and effortless experience possible.

Customer centrality is at the heart of our business and we believe that by exceeding customer expectations we can nurture long term relationships to assist our dealers and end users at every stage. We truly believe this shows the measure of a company and its focus on what is fundamentally important in the market today, Support in its many capacities.

This is the guarantee and promise we bring to all of our relationships."

ALISTAIR FORSYTH - Group President and Managing Director

TRADE SHOWS



GLOBAL EVENTS

Attendance at trade exhibitions - We control the presence at an exhibition, everything is done professionally and to the best of our ability. Our stand is designed to maximize product exposure and to enhance the visitor experience.

Anaconda ensure they are aware of what customers want in terms of products. Regular contact with our dealers enables us to gauge the needs of the end user so we can target them with the right product at trade events, through adverts and news stories. It is also very important to introduce new products to market on a regular basis to show that we are continuing to evolve and be innovative.

REGULAR EVENTS:

- Hillhead - United Kingdom
- ConExpo - Las Vegas, USA
- AED Summit & Condex - USA
- Steinexpo - Germany
- Bauma - Germany
- Scotplant - United Kingdom

DEALER NETWORK



GLOBAL DISTRIBUTION NETWORK

Anaconda markets, sells and distributes all products and spares through a dedicated network worldwide. Each dealer provides a professional, competitive and supportive service to all customers within their geographical area.

The vast majority of our dealers carry a stock of equipment for immediate delivery as well as a generous stock of spare parts in order to provide an immediate response to any breakdown situation and get you back up and running as soon as possible.

If you require any information on your local Anaconda dealer then please do not hesitate to contact us by sending an email to:

marketing@anacondaequipment.com

AFTER SALES



PARTS AND SERVICING

All Anaconda dealers stock a wide range of components to support our products. Both factories in Northern Ireland and the USA carry a full inventory of parts that can be shipped out to a dealer if the part is not in stock with them directly.

Using Anaconda genuine spare parts will guarantee the quality of the product and maximise the lifespan of your machine. All Anaconda spare parts are held in stock, competitively priced and of the same high quality as the machine itself.

All enquiries regarding spare parts should be directed to your local dealer, if there is no dealer in your local area, then please contact our parts department directly via email:

parts@anacondaequipment.com

CORPORATE SOCIAL RESPONSIBILITY

EMPLOYEE WELFARE

At Anaconda we value and respect our employees which has helped us achieve our success thus far. Team work is of the upmost importance where we are concerned and over the years we have built up a strong hard working team of individuals that stay with us year after year. Our employees feel comfortable in the environment we create.



COMMUNITY ENGAGEMENT

Here at Anaconda we feel it is important to remember those in our community who have helped aid our success. We aim to return the favour by providing support and empowering local teams, schools, events and community-based organisations. Our aim is to transform the local community where our employees live, work and volunteer.



CHARITY WORK

Anaconda's aim is to improve and empower the lives of others as we dedicate time and money to charitable causes to help those in need. Each year we select a different charity and organise events to help raise money and awareness of the given charity. This includes events such as the Belfast City Marathan, Coffee Mornings and Dealer Days to name a few.



WWW.ANACONDAEQUIPMENT.COM



MACHINES IN APPLICATION



DF410 Scalping Screen working in a Limestone application in Italy.



DF514 Scalping Screen working on a Gypsum site in North Carolina.



FTR150 Feeding Conveyor working in a Coal application in Russia.



SR514 (3 Deck) working in an Aggregate application in Australia.



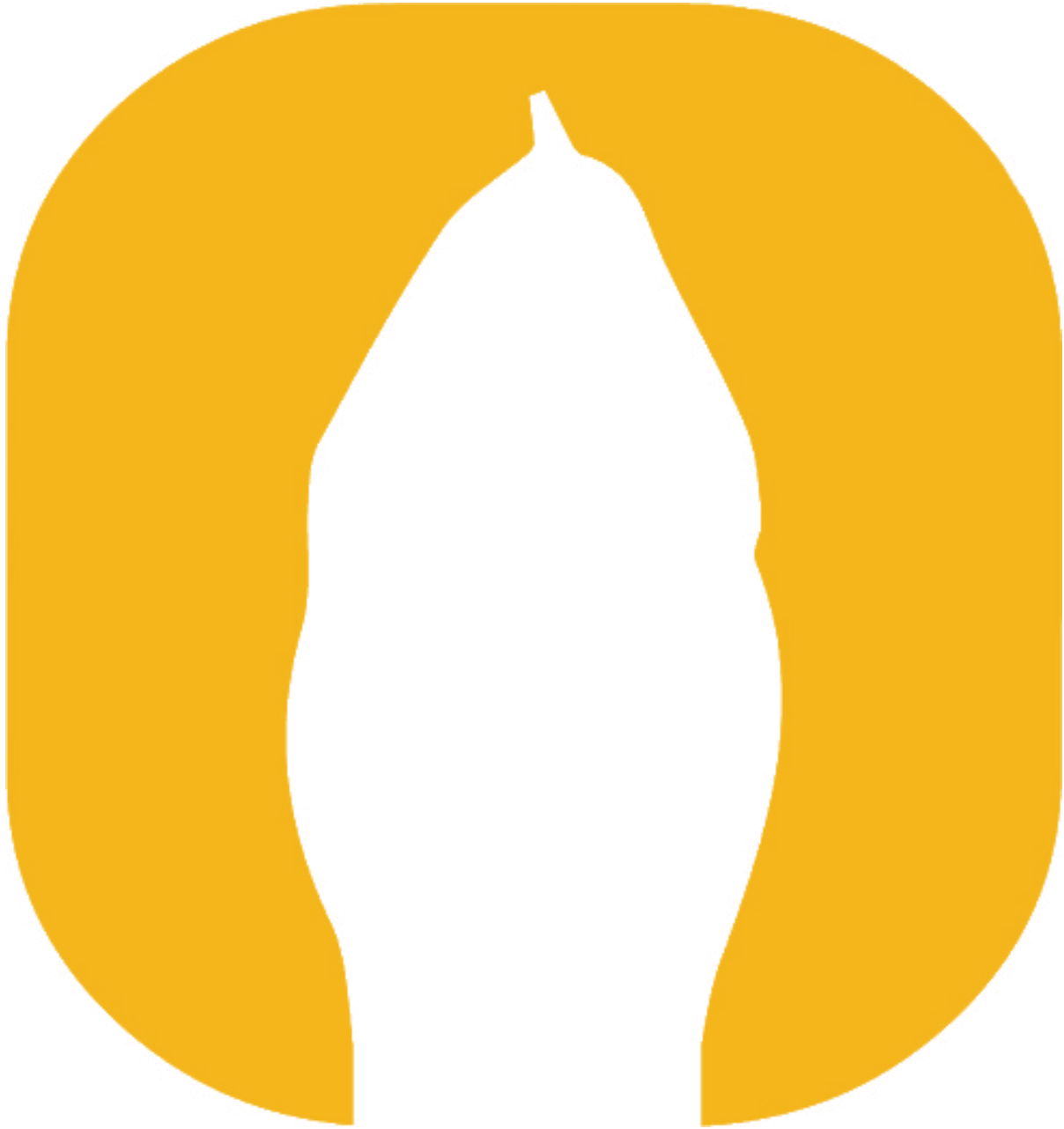
TD516R Trommel Screen working in a Compost application in Austria.



SR520 (2 Deck) working in a Quarry application in Ireland.

WWW.ANACONDAEQUIPMENT.COM





ANACONDA[®]

A McLanahan Company

HEAD OFFICE

Anaconda Equipment International
Ardboe Business Park, Kilmascally Road
Dungannon, Co. Tyrone
BT71 5BJ

Tel: +44 (0) 28 867 37878

Fax: +44 (0) 28 867 36675

Email: sales@anacondaequipment.com

USA

Anaconda
P.O. Box 358
Bellingham
MA 02019

Tel: +1 910) 782-2577

Email: info@SoundHM.com



Sound Heavy Machinery
1809 Blue Clay Road
Wilmington, NC 28405
(910) 782-2477

